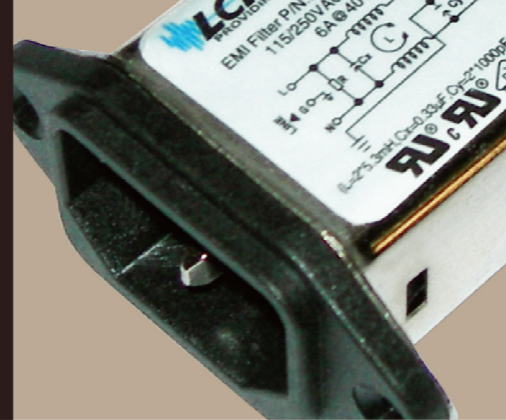


LCR 080-L / 080M-L

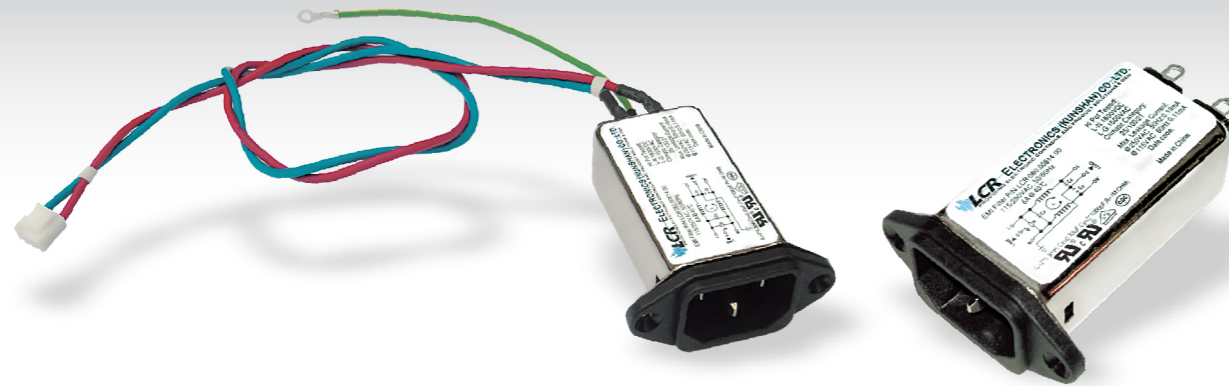
High Performance and High Attenuation Power Entry Filters

高性能, 高衰减插座式电源滤波器



Model No. 型号	Model No. 型号	Rated Current @ 40°C 额定电流	Mechanical Diagram 外形图	Unit Weight 单重 (g)	Terminal Options 连接方式	
					In 入	Out 出
080.00314.00-L	080M.00314.00-L	3A	A/B	90	IEC Inlet Socket	Solder tab/Faston 6.35*0.8
080.00414.00-L	080M.00414.00-L	4A	A/B	90	IEC Inlet Socket	Solder tab/Faston 6.35*0.8
080.00614.00-L	080M.00614.00-L	6A	A/B	90	IEC Inlet Socket	Solder tab/Faston 6.35*0.8
080.00814.00-L	080M.00814.00-L	8A	A/B	90	IEC Inlet Socket	Solder tab/Faston 6.35*0.8

Please mark terminals type at the end of the P/N when order or inquiry /请在订单或询价单上注明端子类型



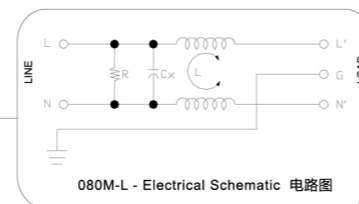
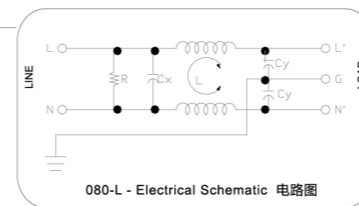
LCR 080-L Series/系列

Features/特点

High performance and high attenuation power entry filters. Extended inductance and capacitance designed to provide the optimal EMC results.
高性能, 高衰减插座式电源滤波器, 扩展电容和电感可达到最佳EMC效果

Typical Applications/应用范围

Specially designed for LCD and PDP TV, medical equipment and general electrical appliances.
专业为LCD, PDP医疗仪器, 电器设备而设计



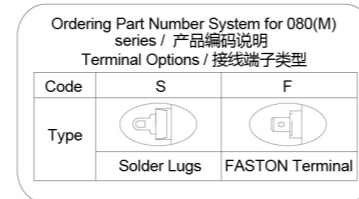
LCR 080M-L Series/系列

Features/特点

High performance and high attenuation with low leakage current power entry filters. Extended inductance and capacitance designed to provide the optimal EMC results.
高性能, 高衰减, 低漏电流, 扩展电容和电感可达到最佳EMC效果

Typical Applications/应用范围

Medical applications and any equipment that requires low leakage current
医疗设备, 对低漏电流于要求的仪器和设备

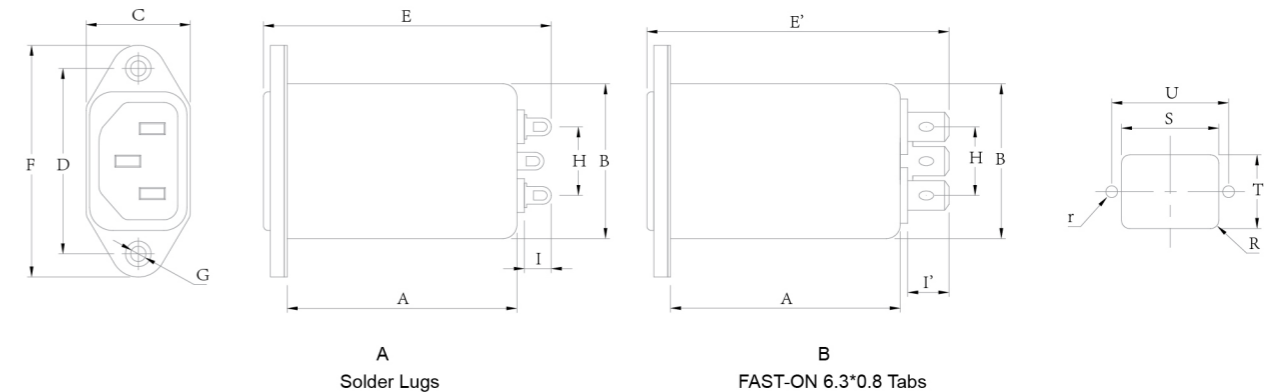


Technical Data/技术参数

Rated Voltage Max. (V) 最高额定电压	250VAC	Leakage Current 080-L Series 080-L系列 漏电流	
Rated Current (A) 额定电流	1 - 8A @ 40°C	@ 250 VAC / 50Hz	0.42 mA Max.
Over Load (% of rated Current)	150% for 1 minute	@ 120 VAC / 60Hz	0.23 mA Max.
过载 (额定电流百分比)	50 / 60Hz	Leakage Current 080M-L Series 080M-L系列 漏电流	
Operating Frequency (Hz) 工作频率		@ 250 VAC / 50Hz	10 µA Max.
Hipot Rating 高压等级	1450V DC	@ 115 VAC / 60Hz	5 µA Max.
(Line to Line 线对线)	2250V DC	IP Class 防尘防水等级	IP52
(Line to Ground 线对地)	Plated Steel	Climatic category 气候类别 (EN60068-1)	25 / 100 / 21
Case 外壳	54 / 160 Pcs per carton	Operating temperature 工作温度	from -25OC to 100OC
Packaging Quantity 包装数量	126 pcs per carton		

* Under Application / 正在申请

LCR 080-L/080M-L Mechanical Outlines/外形图



LCR 080-L/080M-L Mechanical Dimensions (mm)/外形尺寸

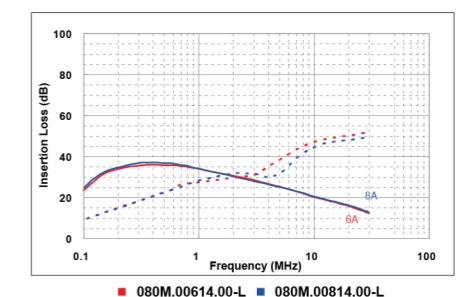
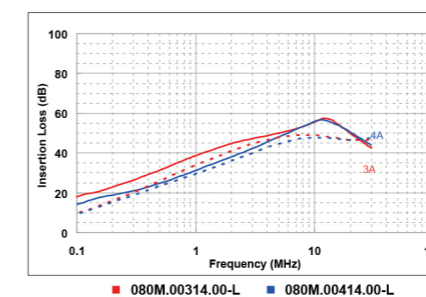
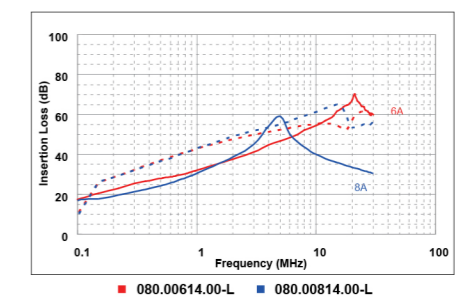
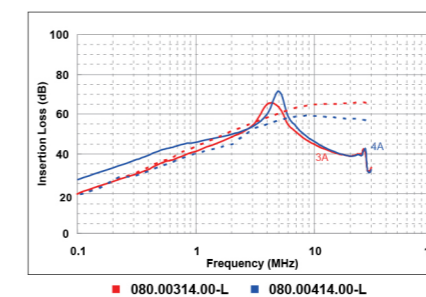
Model No.	Model No.	A	B	C	D	E	E'	F	G	H	I	I'	R	S	T	U	r
080.00314.00-L	080M.00314.00-L	53.3	28.6	22.4	40.0	69.0	71.5	47.6	2*Φ4.2	12.8	6.0	8.5	3.0	29.6	21.2	40.0	2.1
080.00414.00-L	080M.00414.00-L	53.3	28.6	22.4	40.0	69.0	71.5	47.6	2*Φ4.2	12.8	6.0	8.5	3.0	29.6	21.2	40.0	2.1
080.00614.00-L	080M.00614.00-L	53.3	28.6	22.4	40.0	69.0	71.5	47.6	2*Φ4.2	12.8	6.0	8.5	3.0	29.6	21.2	40.0	2.1
080.00814.00-L	080M.00814.00-L	53.3	28.6	22.4	40.0	69.0	71.5	47.6	2*Φ4.2	12.8	6.0	8.5	3.0	29.6	21.2	40.0	2.1

所有单位为mm, 1 inch=25.4 mm (All dimensions in mm)

For reference purpose only 仅供参考

LCR 080-L/080M-L Insertion Loss in dB measured in a 50Ω system /50 Ω环境下插入损耗

— Common Mode --- Differential Mode



* Other specifications, requirements and customizations can be offered upon request. / 其它规格可以根据您的要求定做